

Roadmap to the city dashboards

All the SoCR city data dashboards are structured in the same way. Using selected indicators from the State of Cities Open Data Almanac (SCODA), they present a thematic storyline about city performance. Indicators are a snapshot of selected trends or facts that are used to “indicate” the state or condition of something. Where data is available for more than one year, the indicators show how conditions are changing over time. They are, therefore, by no means a comprehensive assessment of the issues represented, but provide the ability to benchmark cities. The 2016 Data Almanac section of this report provides additional information and guidance on the methodology, indicator definitions, metadata, and data access. It also lists an expanded set of indicators available in SCODA. These profiles are intended to display comparative data and indicators in an easy-to-view format, which requires using uniform data sources. Therefore, while newer or additional data may be available for some cities, it was not used in order to retain comparability. And, in some cases, provincial averages are used as proxies (e.g. life expectancy). Improving on the ability to report consistently, credibly and comparatively on such indicators is the primary goal of SCODA.

PEOPLE AND HOUSEHOLDS

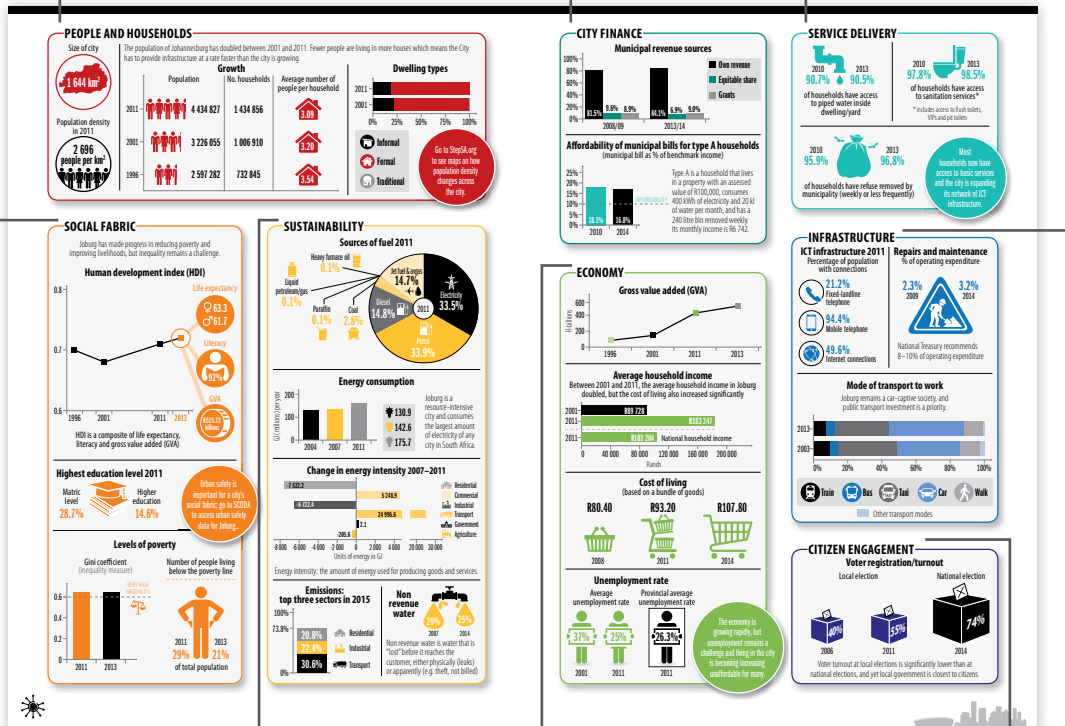
How is our city growing and changing?

CITY FINANCE
How financially secure are our cities?

SERVICE DELIVERY

Do urban residents have access to reliable basic services?

INFRASTRUCTURE
Are we responding to infrastructure needs and investing in building infrastructure for the future?



SOCIAL FABRIC
Are we transforming our cities into places that are creating a better life for all?

SUSTAINABILITY
Are we using resources responsibly?

ECONOMY
Is our economy growing and do people have economic access?

CITIZEN ENGAGEMENT
How are we engaging in governance?

CITY PROFILES

Individual city reports

